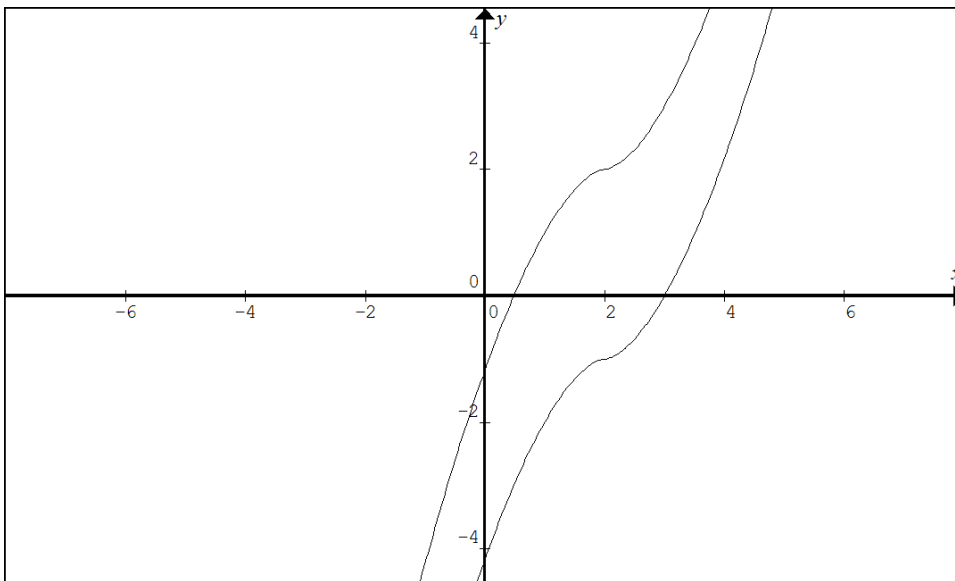
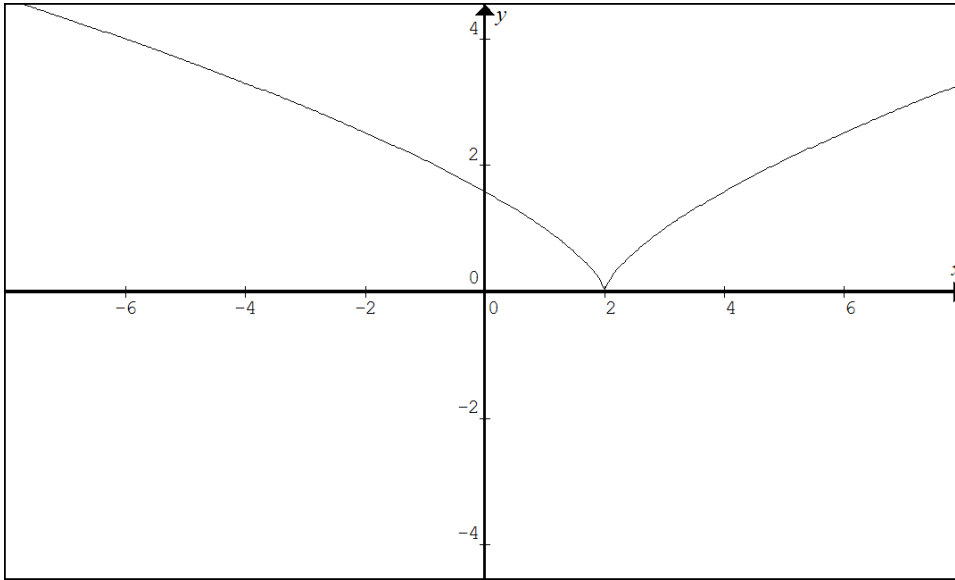


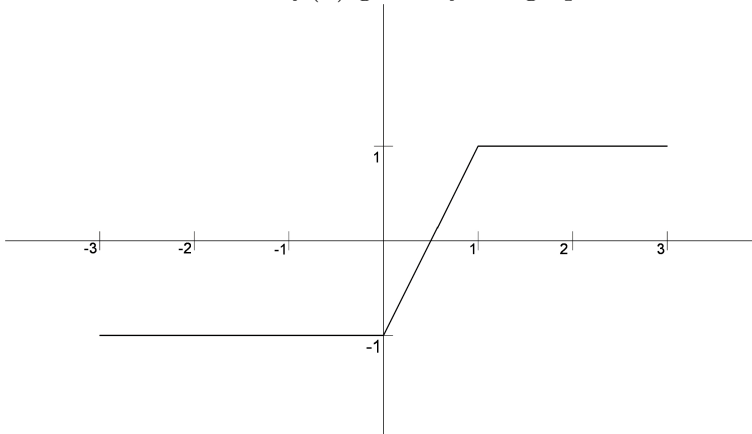
Math 124 - Section 012
Quiz on 6.1 with solutions

Write clearly and **show all of your work**. Good luck.

1. The function $f(x)$ is graphed below. Draw graphs of two antiderivatives of $f(x)$, $F_1(x)$ and $F_2(x)$, such that $F_1(2) = -1$ and $F_2(2) = 2$. Use the blank graph at the bottom of the page. You will not receive full credit if your graphs are not clearly drawn and labeled.



2. Consider the function $f(x)$ given by the graph below:



Draw the graph of an antiderivative, F , of f such that $F(0) = 0$. Label your graph carefully.

Solution: This was done in class.